

### Specifications

#### Models S-65 XC & S-65 TraX

Measurements	Metric	US
Working height maximum*	21.81 m	71 ft
Platform height maximum	19.81 m	65 ft
Horizontal reach maximum	16.51 m	54 ft 2 in
Below ground reach	2.65 m	8 ft 8 in
▲ Platform length - 8 ft model	0.91 m	3 ft
▲ Platform length - 6 ft model	0.76 m	2 ft 6 in
▲ Platform width - 8 ft model	2.44 m	8 ft
▲ Platform width - 6 ft model	1.83 m	6 ft
▲ Height - stowed, tyres	2.81 m	9 ft 3 in
▲ Height - stowed, TraX	2.81 m	9 ft 3 in
▲ Length - stowed, tyres	9.76 m	32 ft
▲ Length - stowed, TraX	9.76 m	32 ft
▲ Length, transport (jib tucked under)	7.80 m	25 ft 7 in
▲ Width, tyres	2.49 m	8 ft 2 in
▲ Width, TraX	2.58 m	8 ft 5-11/16 in
▲ Wheelbase	2.50 m	8 ft 2 in
▲ Ground clearance - center, tyres	0.41 m	16.3 in
▲ Ground clearance - center, TraX	0.41 m	16.3 in

### Productivity

Maximum lift capacity - unrestricted	300 kg	660 lbs
- restricted	454 kg	1,000 lbs
Platform rotation	160°	160°
Vertical jib rotation	133° (+ 79° /- 54°)	
Turntable rotation	360° continuous	
Turntable tailswing	1.41 m	4 ft 7.5 in
Drive speed - stowed, tyres	4.8 km/h	3.0 mph
- stowed, TraX	3.7 km/h	2.3 mph
- raised/extended, tyres	0.3 m/s	1 ft/s
- raised/extended, TraX	0.2 m/s	0.7 ft/s
Gradeability - stowed**	45%	45%
Turning radius - inside, tyres	2.40 m	7 ft 9 in
- inside, TraX	3.48 m	11 ft 5 in
Turning radius - outside, tyres	5.50 m	18 ft 2 in
- outside, TraX	6.50 m	21 ft 4 in
Controls	12V DC proportional	
Tyres - RT foam filled	355/55D 625	
TraX - Track system	Vermeer Track System	
Ground pressure, tyres	620 kPa	90 psi
Ground pressure, TraX	170 kPa	25 psi

### Power

Power source, tyres	Deutz diesel D2011L03i, 48 hp (36 kW)	
Power source, TraX	Deutz diesel TD 2.9 L4, 74 hp (55kW), Stage IIIB	
Auxiliary power unit	12V DC	12V DC
Hydraulic tank capacity	151 L	40 gal
Fuel tank capacity - diesel	132 L	35 gal

### Sound & Vibration Levels

Sound pressure level (ground workstation)	83 dBA	83 dBA
Sound pressure level (platform workstation)	79 dBA	79 dBA
Vibration	<2.5 m/s <sup>2</sup>	<8 ft 2 in/s <sup>2</sup>

### Weight\*\*\*

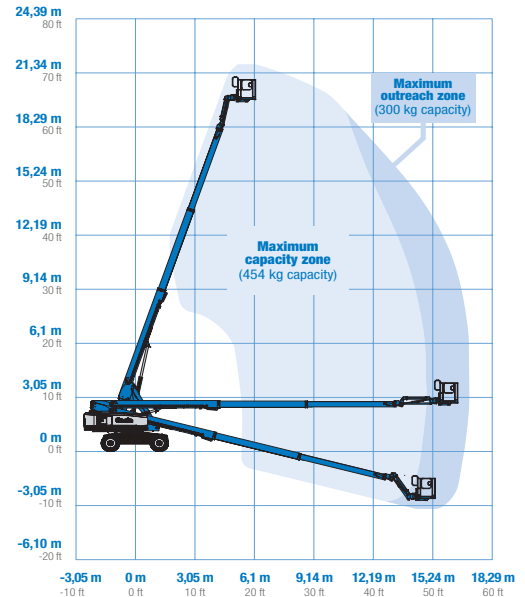
Tyres	11,412 kg	25,160 lbs
TraX	13,154 kg	29,000 lbs

### Standards Compliance

standard EN280);  
(Outdoor Noise)

EU Directives: 2006/42/EC - Machinery (harmonized  
2004/108/EC (EMC); 2000/14/EC

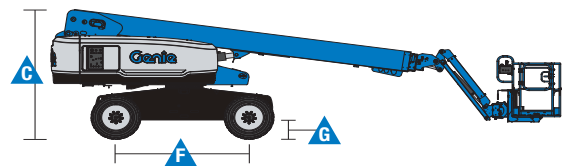
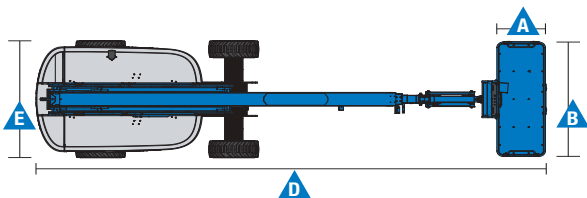
### Range Of Motion S-65 XC & S-65 TraX



\* The metric equivalent of working height adds 2 m to platform height. U.S. adds 6 ft to platform height.

\*\* Gradeability applies to driving on slopes. See operator's manual for details regarding slope ratings.

\*\*\* Weight will vary depending on options and/or country standards.



### Features

Standard Features	Easily Configured To Meet Your Needs	Options & Accessories
-------------------	--------------------------------------	-----------------------

#### Measurements

##### S-65 XC & S-65 TraX

- 21.81 m (71 ft) working height
- 16.51 m (54 ft 2 in) horizontal reach
- 300 kg (660 lb) unrestricted and 454 kg (1,000 lb) restricted lift capacity

#### Productivity

- Automatic envelope control
- Self-leveling platform
- 160° hydraulic platform rotation
- Thumb rocker steering
- Proportional joystick controls
- Hydraulic oil cooler
- Drive enable system
- Chassis tilt drive function cut-out
- AC power cord to platform
- Horn
- Hour meter
- Descent and tilt alarm
- Flashing beacon & travel alarm
- 360° continuous turntable rotation
- Positive traction drive
- Two speed wheel motors
- On board full diagnostics and engine monitoring display
- Telematics ready connector
- Lift Guard™ Contact Alarm
- Work tray

#### Power

- 12 V DC auxiliary power
- Anti-restart engine protection
- Auto engine fault shutdown
- Intake air heater
- Engine gauge package

#### Platform Options

- Steel 1.83 m (6 ft) dual-entry platform with side swing gate
- 2.44 m (8 ft) tri-entry platform with side swing gate (standard)

#### Jib

- 1.52 m (5 ft) jib

#### Engine Options

- Deutz diesel 48 hp (36 kW) (Tyres)
- Deutz diesel 74 hp (55 kW) Stage IIIB (TraX)

#### Drive

- 4 x 4

#### Axle

- Active oscillation (standard)

#### Tyre Options

- Rough terrain foam-filled (standard on Tyres)
- Rough terrain non-marking foam-filled (optional on Tyres)
- Vermeer Track System (standard on TraX)

#### Productivity Options

- Lift Guard™ Half mesh platform panels<sup>(1)</sup>
- Platform auxiliary top rail
- Airliner to platform<sup>(1)</sup>
- Power to platform: plug, socket, with optional Residual-current Circuit Breaker with Overcurrent protection<sup>(2)</sup>
- Lights package (2 on chassis, 2 on platform)<sup>(1)</sup>
- Biodegradable hydraulic oil<sup>(1)</sup>
- Hostile environment kit<sup>(1)</sup>: cylinder bellows, boom wiper seals, platform and ground control box cover
- Chassis tilt lift function cut-out kit
- Panel cradle package<sup>(1)</sup>
- Lockable platform & ground control box covers

#### Power Options

- Lift Power™ 3kW AC generator, 110V/50Hz or 220V/50Hz
- EMEAR Cold Start kit: Inc. Engine heater & battery charger
- Diesel catalytic scrubber muffler<sup>(1)</sup>



<sup>(1)</sup> Factory-fit option only

<sup>(2)</sup> Not available if a generator is selected

#### United Kingdom and MESART

The Maltings, Wharf Road, Grantham NG31 6BH, T: +44 800 988 3739 (toll free), Fax +44 (0)1476 584334, Email AWP-InfoEurope@terex.com

Middle East, Southern Africa, Russia and Turkey, T: +971 4 399 0381, Email AWP-InfoME@terex.com

Visit [www.genielift.com/en-gb/about-genie/locations](http://www.genielift.com/en-gb/about-genie/locations) to view our global locations list.

#### Worldwide Manufacturing And Distribution

Australia · Brazil · Caribbean · Central America · China · France · Germany · Italy · Japan · Korea · Mexico · Russia · Southeast Asia · Spain · Sweden · United Arab Emirates · United Kingdom · United States

Product specifications and prices are subject to change without notice or obligation. The photographs and/or drawings in this document are for illustrative purposes only. Refer to the appropriate Operator's Manual for instructions on the proper use of this equipment. Failure to follow the appropriate Operator's Manual when using our equipment or to otherwise act irresponsibly may result in serious injury or death. The only warranty applicable to our equipment is the standard written warranty applicable to the particular product and sale and we make no other warranty, express or implied. Products and services listed may be trademarks, service marks or trade names of Terex Corporation and/or their subsidiaries in the USA and many other countries. Genie is a registered trademark of Terex South Dakota, Inc. © 2019 Terex Corporation.

